



Tomaree Ratepayers and Residents Association General Meeting 18 June 2018

Agenda

1. Apologies
2. **GUEST SPEAKER - EILEEN GILLILAND, CEO, DESTINATION PT STEPHENS**
3. Minutes of meeting 18 April 2018 (Posted on TRRA Website)
4. Business Arising
5. Correspondence In and Out
6. Business Arising from Correspondence
7. Treasurers Report
8. **Nelson Bay Delivery Program**
9. Nelson Bay Now Report
10. Town Gateway - Nelson Bay Road and Signage
11. DA Updates
12. Tomaree Sports Complex Master Plan
13. Cabbage Tree Road Sand Quarry Appeal
14. General Business



2. Guest Speaker- Eileen Gilliland, CEO Destination Port Stephens

Port Stephens
P.S. I love you xx

Agenda

1. Apologies
2. Guest Speaker- Eileen Gilliland, CEO Destination Port Stephens
3. Minutes of meeting 18 April 2018 (Posted on TRRA Website)
4. Business Arising
5. Correspondence In and Out
6. Business Arising from Correspondence
7. Treasurers Report
8. Nelson Bay Delivery Program
9. Nelson Bay Now Report
10. Town Gateway - Nelson Bay Road and Signage
11. DA Updates
12. Tomaree Sports Complex Master Plan
13. Cabbage Tree Road Sandmine Appeal
14. General Business



7. Treasurers Report



TRRA		
Income and Expenditure Statement		
	Apr/May 2018	Year to Date
OPENING BALANCE	\$ 2,603.65	\$ 2,351.21
INCOME		
Subscriptions	\$ 70.00	\$ 840.00
Gold Coin Donations	\$ 69.40	\$ 451.50
Donations	\$ 200.00	\$ 530.00
TOTAL INCOME	\$ 339.40	\$ 1,821.50

EXPENDITURE		
Advertising	\$ -	\$ -
Postage	\$ -	\$ -
PO Box	\$ -	\$ 127.00
Printing	\$ -	\$ 296.00
Photocopying	\$ 96.90	\$ 96.90
Lodgement Fees	\$ -	\$ 60.00
Internet Services	\$ -	\$ 589.66
Stationery	\$ -	\$ -
GIPA Expenditure	\$ 45.00	\$ 45.00
Associations Membership	\$ -	\$ 157.00
Professional Services	\$ -	\$ -
TOTAL EXPENSES	\$ 141.90	\$ 1,371.56
SURPLUS/DEFICIT	\$ 197.50	\$ 449.94
CLOSING BALANCE	\$ 2,801.15	\$ 2,801.15
Denis Pittorino Treasurer		

Approval for Payments

Annual Membership of EcoNetwork \$25.00

8. Nelson Bay Delivery Program Nigel Waters

- § Report on meetings with new planning managers, 24 April & 23 May
- § Report on Public Domain Plan workshop 17 May and subsequent TRRA feedback
- § Report on meeting arranged by Nelson Bay Now with Mayor and East Ward Councillors - 14 June (incl. Mayor's Car Park Advice)
- § Strategy and Delivery Program now expected to return to Council in August
- § Nominations for Relevant Panels
 - Ø Implementation Panel – Nigel Waters & Geoff Washington
 - Ø Citizen's Panel – Parking (Council to appoint)

§ Nelson Bay DAs

1 Yacaaba St (Cnr Yacaaba and Donald Streets)

Church St Apartments

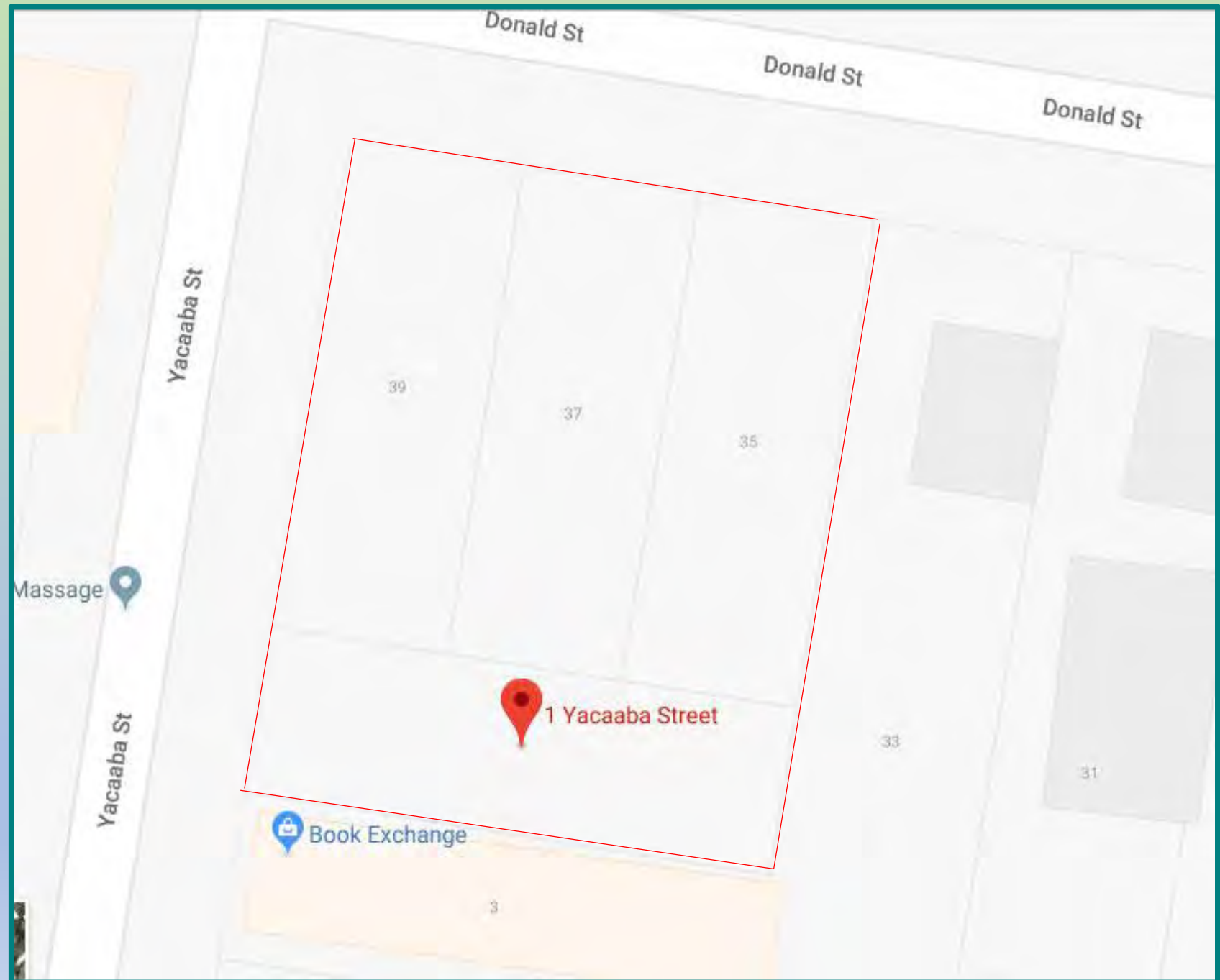
Government Road Apartments

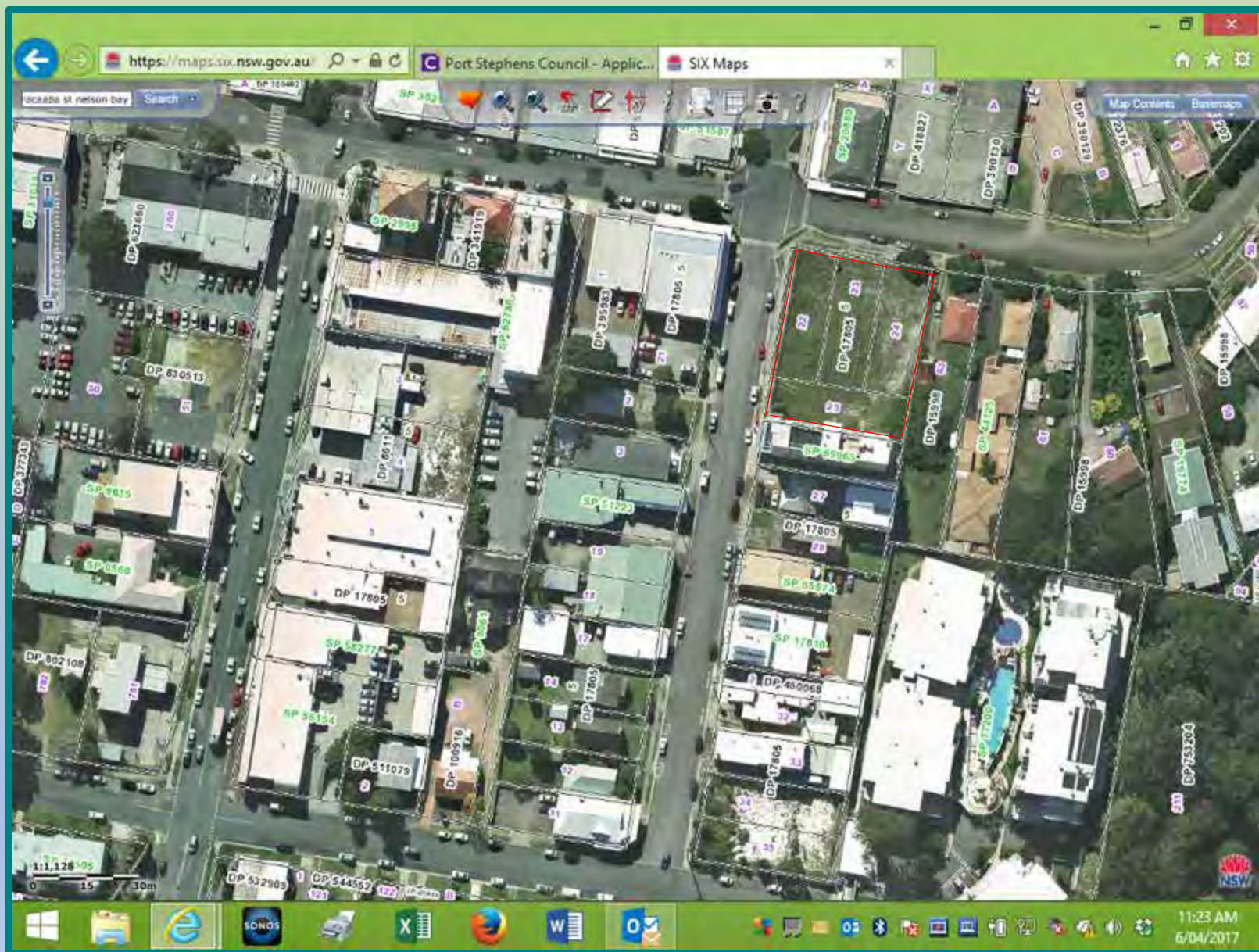
Townhouses on old Bunnings site

1 Yacaaba Street
35 Donald St
37 Donald St
39 Donald St
Nelson Bay

Demolition of Existing
Carpark, Construction of
Residential Flat Building
(10 Storeys, 60 Units) and
Retail/Commercial Units(2)

Only 2 weeks to comment
21 June- 6 July







Mock-Up of Impact of 10- storeys at 3 Yacaaba Street

Note effect of
3-storey
building
overshadowing
in Yacaaba
Street



Montage Comparing Proposed Building Height with
Compliant 15m Height Envelope (*from Development Application*)



**Ascent
Apartments
11-13
Church
Street**

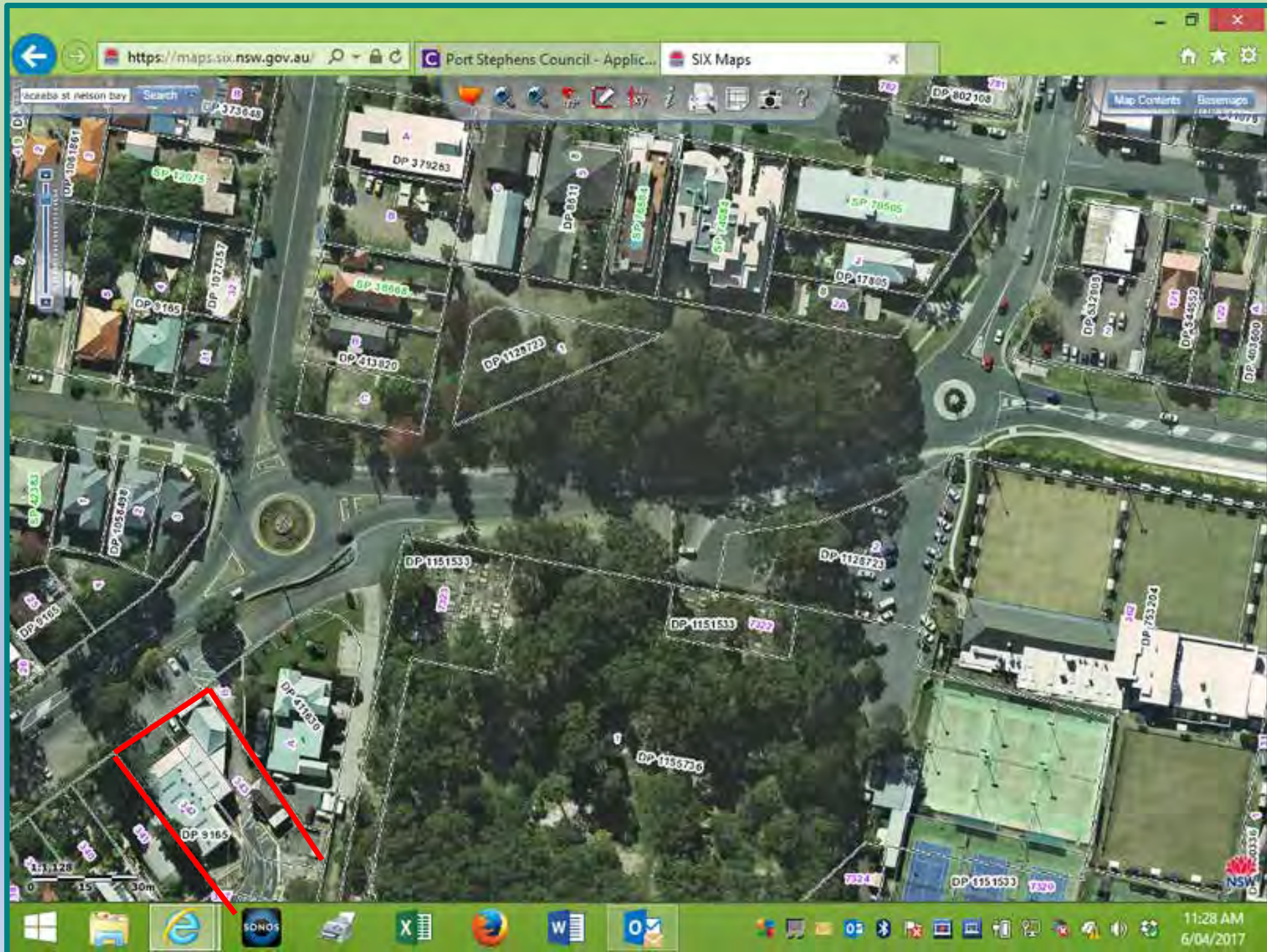
Government Road Apartments



3D MONTAGE



Townhouses
on old
Bunnings
site



9. Nelson Bay Now Report Geoff Washington

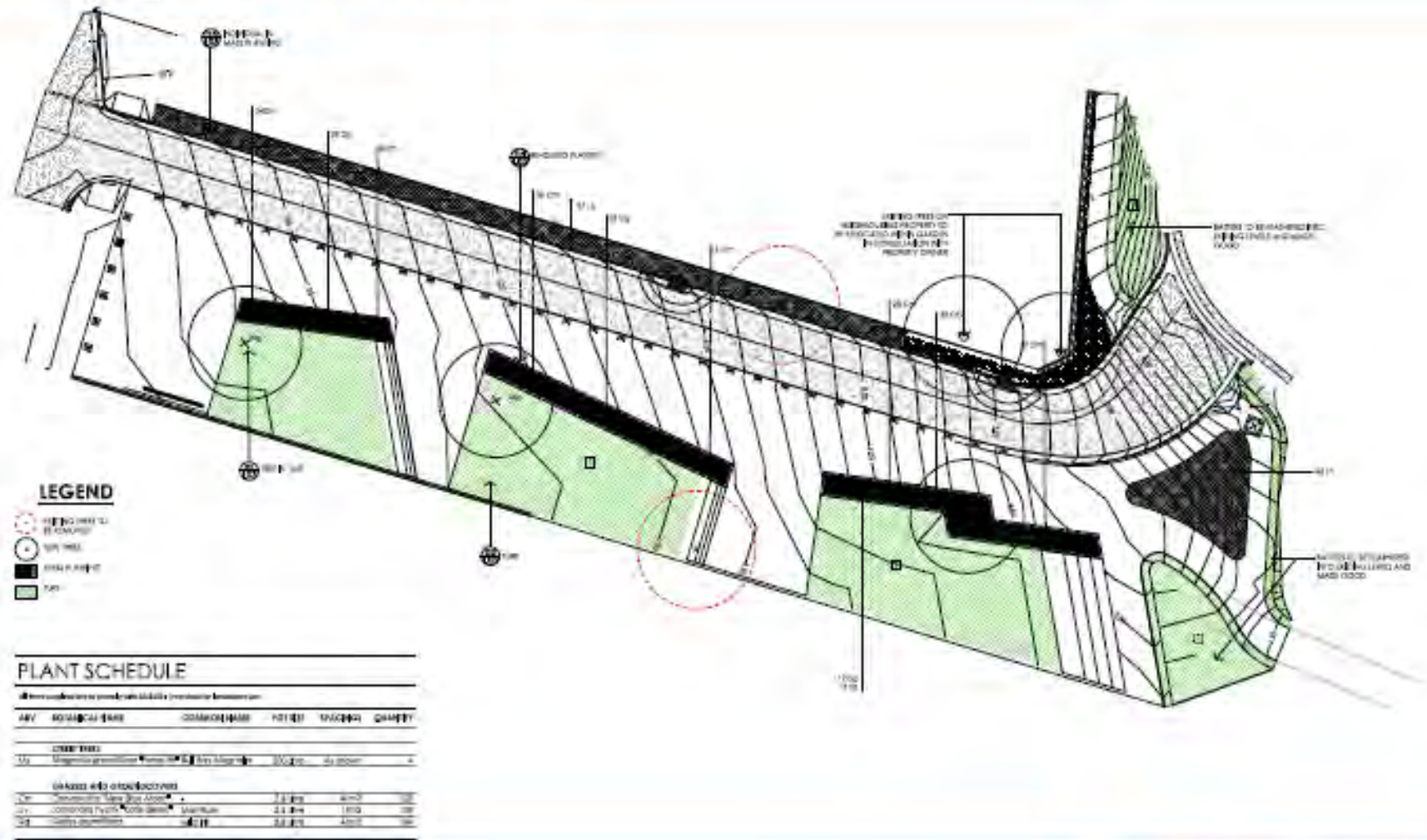
§ Yacaaba Street extension

§ Contact with Council and Destination Port Stephens on transport and parking issues

§ Civic Pride Group, Inc. Working Bee 27 May Margaret Wilkinson

Yacaaba Street Extension Final plans Landscaping Traffic

Landscape Plan



Yacaaba Street Extension

Nearing completion

Traffic lane well-marked for shared access

Nelson Bay Now proposals for traffic management not implemented at this stage

Nearing Completion



Traffic Management in Yacaaba Street Extension



Contact with Council and Destination Port Stephens on Transport and Parking Issues

Nelson Bay Now has written to Destination Port Stephens to invite discussion on:

- parking for coaches

- coach storage facilities when passengers are on cruises

- possibility of separate drop-off points and coach storage

- possibility for a transport interchange ideally in Nelson Bay Town Centre

Civic Pride Group Working Bee 27 May

Photo: Henk Tobbe



Beyond the Call of Duty!

Photo: Henk Tobbe



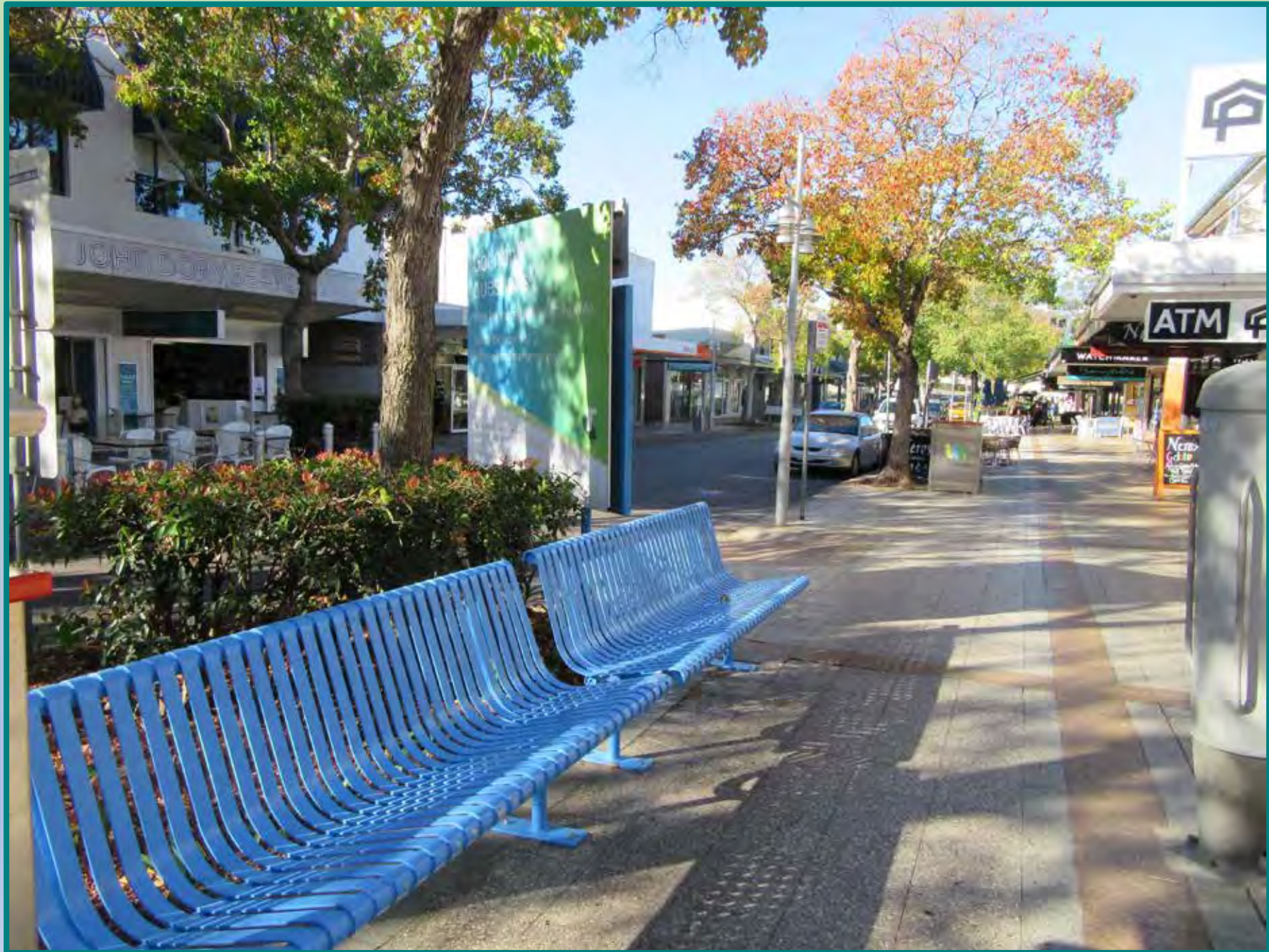
Our Gardener Extraordinaire!

Photo: Henk Tobbe



Donald Street





10. Town Gateway - Nelson Bay Road and Signage











Recent
improvement
to Town
entrance



11. DA Updates

- § Fleet Street re-development
- § 220 Soldiers Point Road
- § Birubi Beach Resort
- § Bobs Farm planning proposal for outdoor recreation - Wakeboard park
- § High Density Manufactured homes developments on rural land

Figure 3 – Aerial Photograph of the Development Site



Fleet
Street

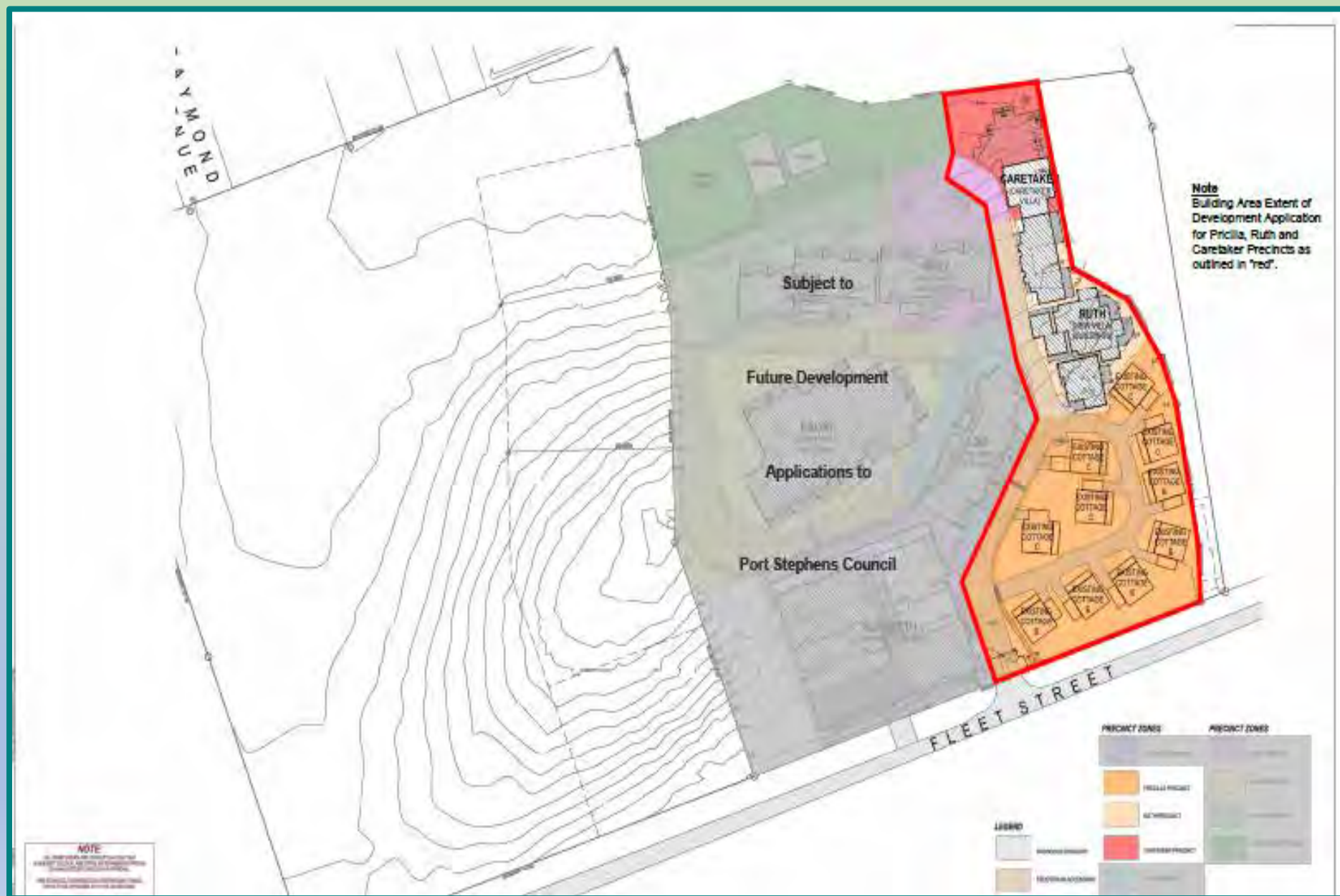
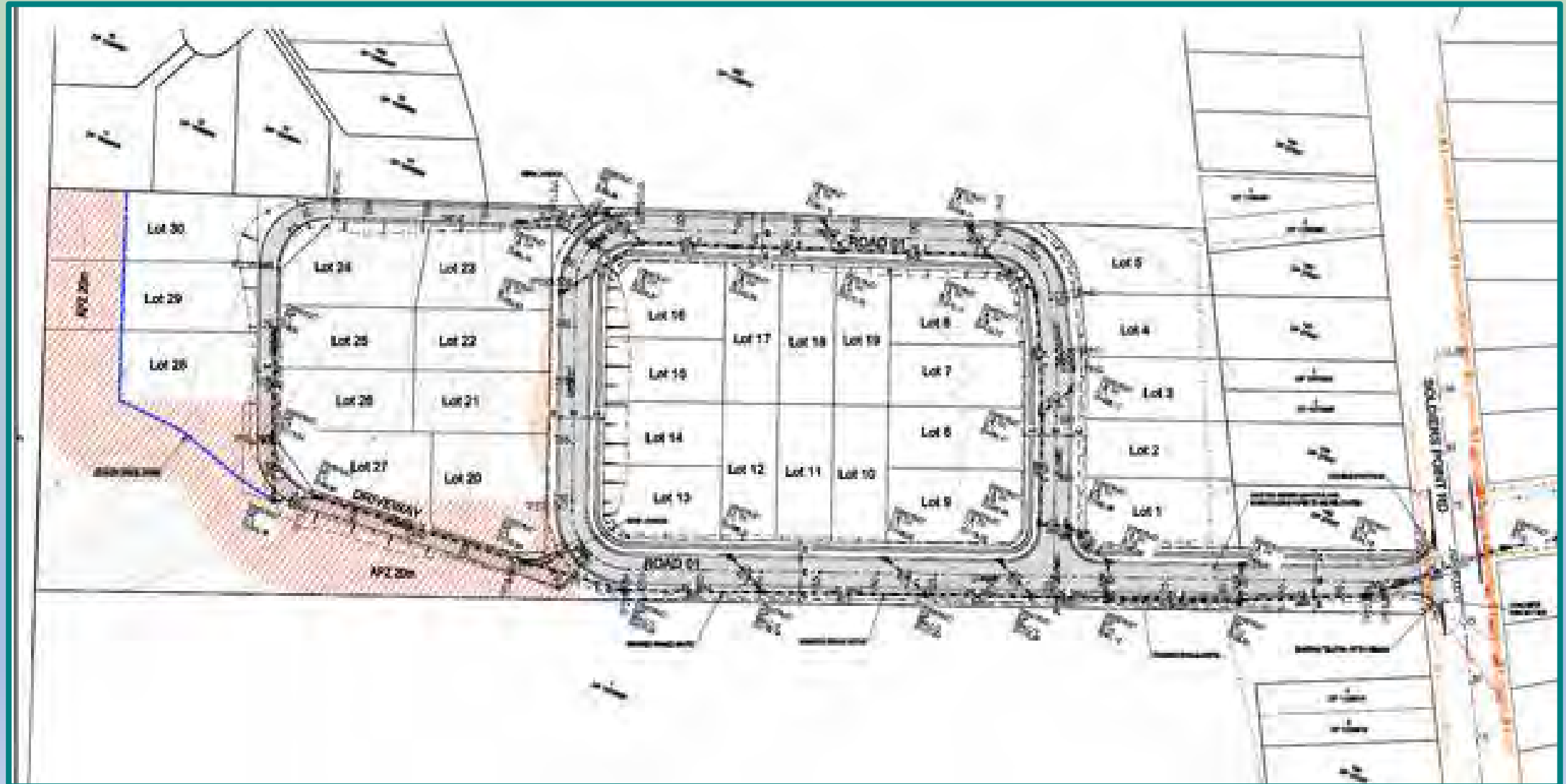


Figure 10 – Plan of Asset Protection Zones.



220 Soldiers Point Road 2017 DA



220 Soldiers Point Road 2018 DA



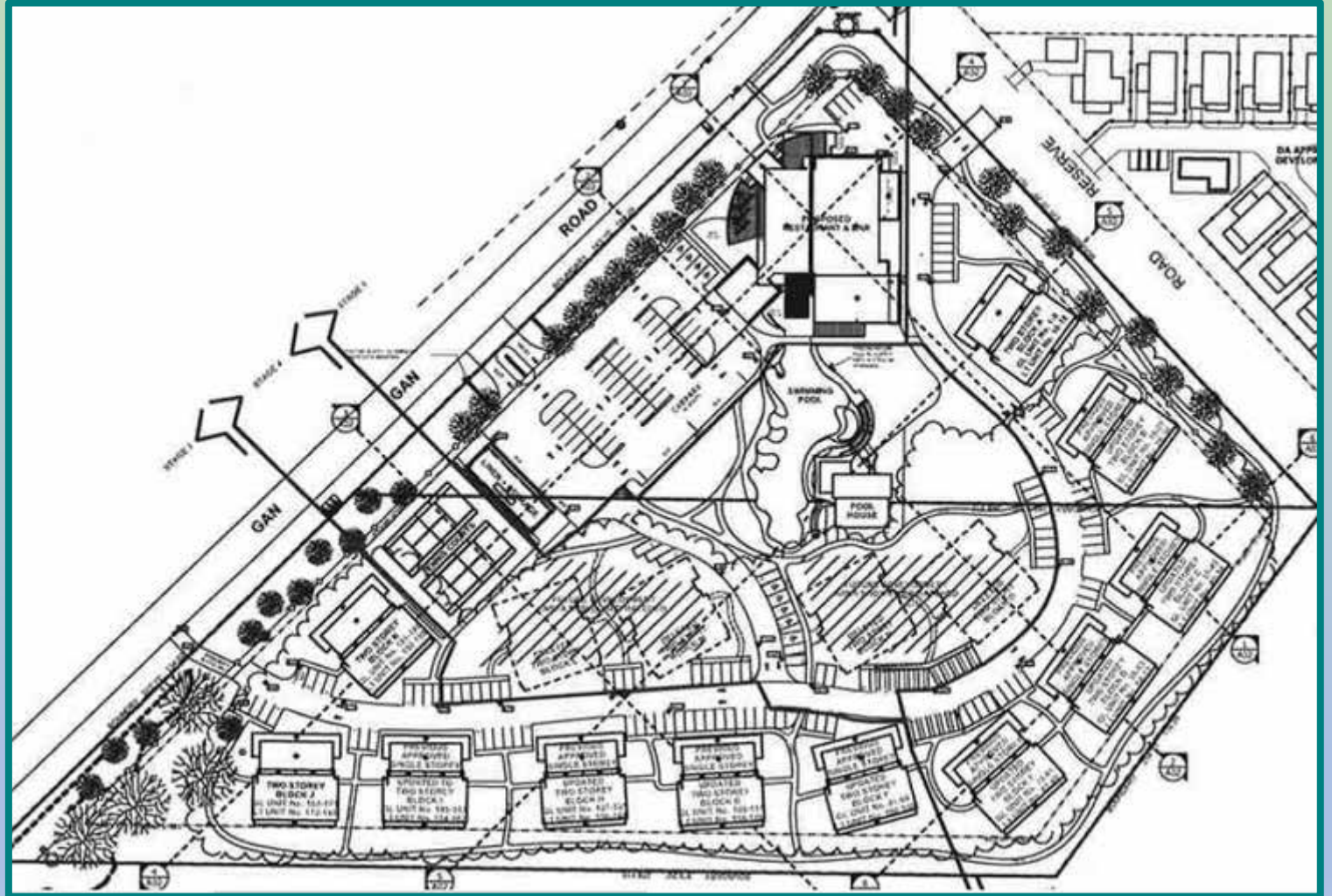
Birubi Beach Resort





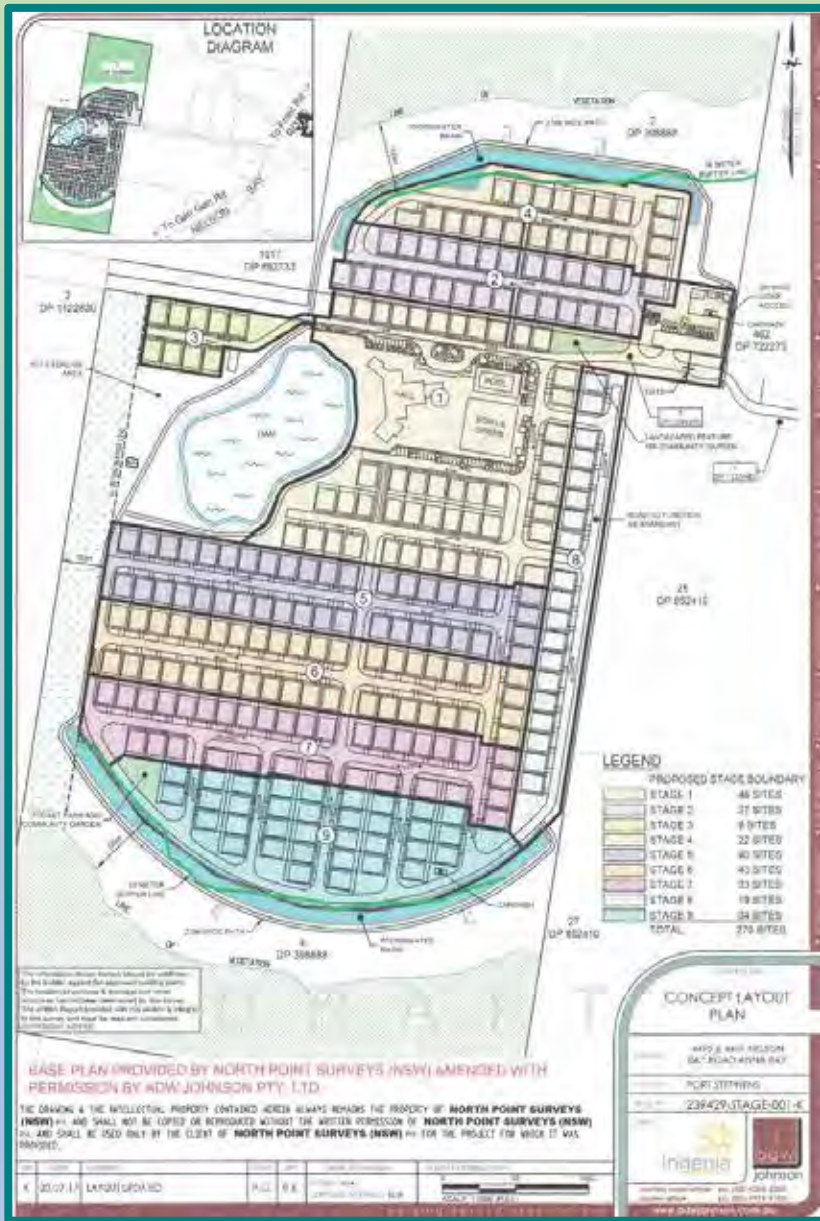
Moving Sand Birubi Beach Resort

Latest Plan



Bob's Farm
Planning
Proposal for
Outdoor
Recreation –
Wakeboard
Park





Latitude One – Off Nelson Bay Road, Anna Bay

The Boardwalk

Sunrise

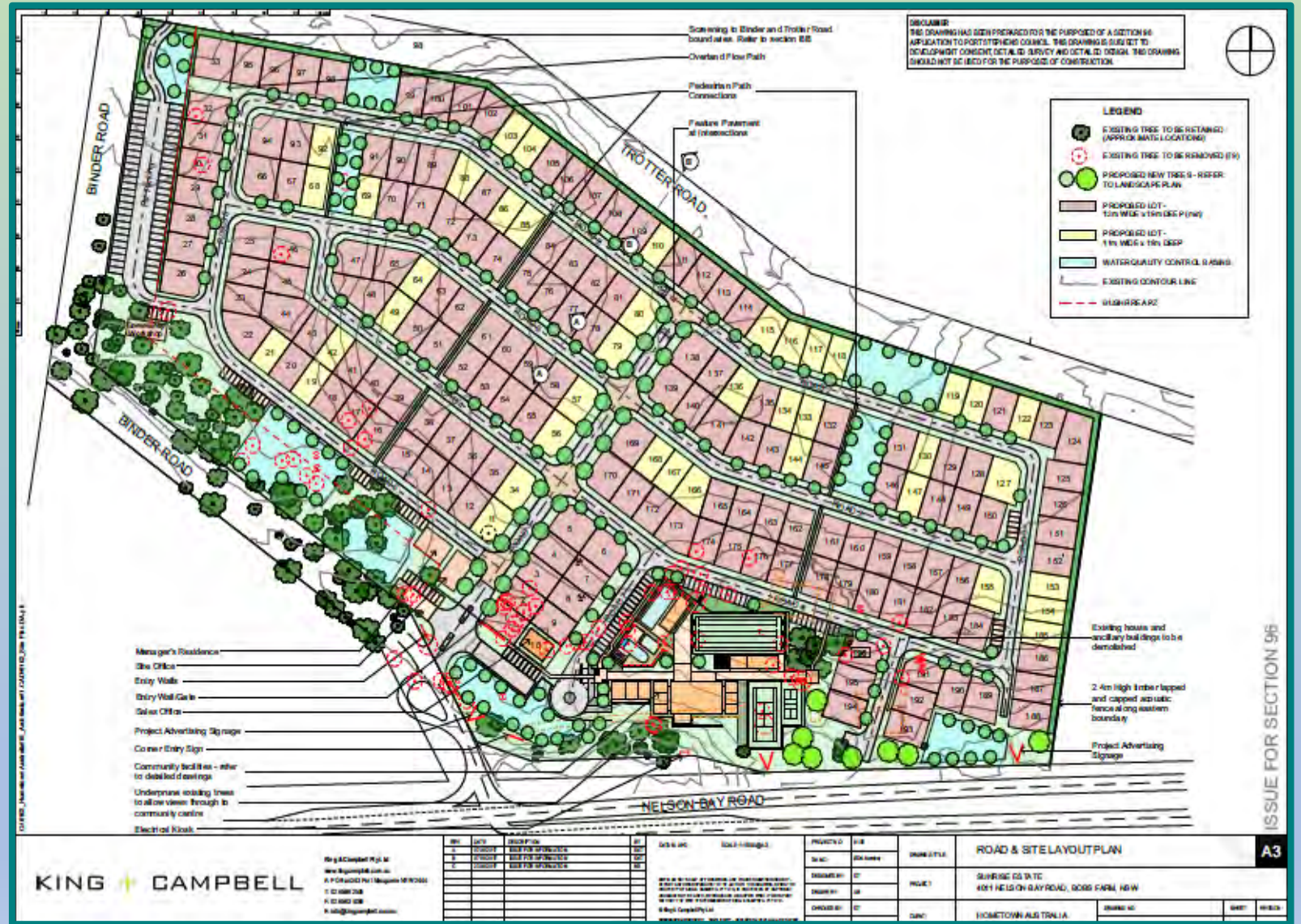
Either side of Trotter Road, Anna Bay



Manufactured Home Estates

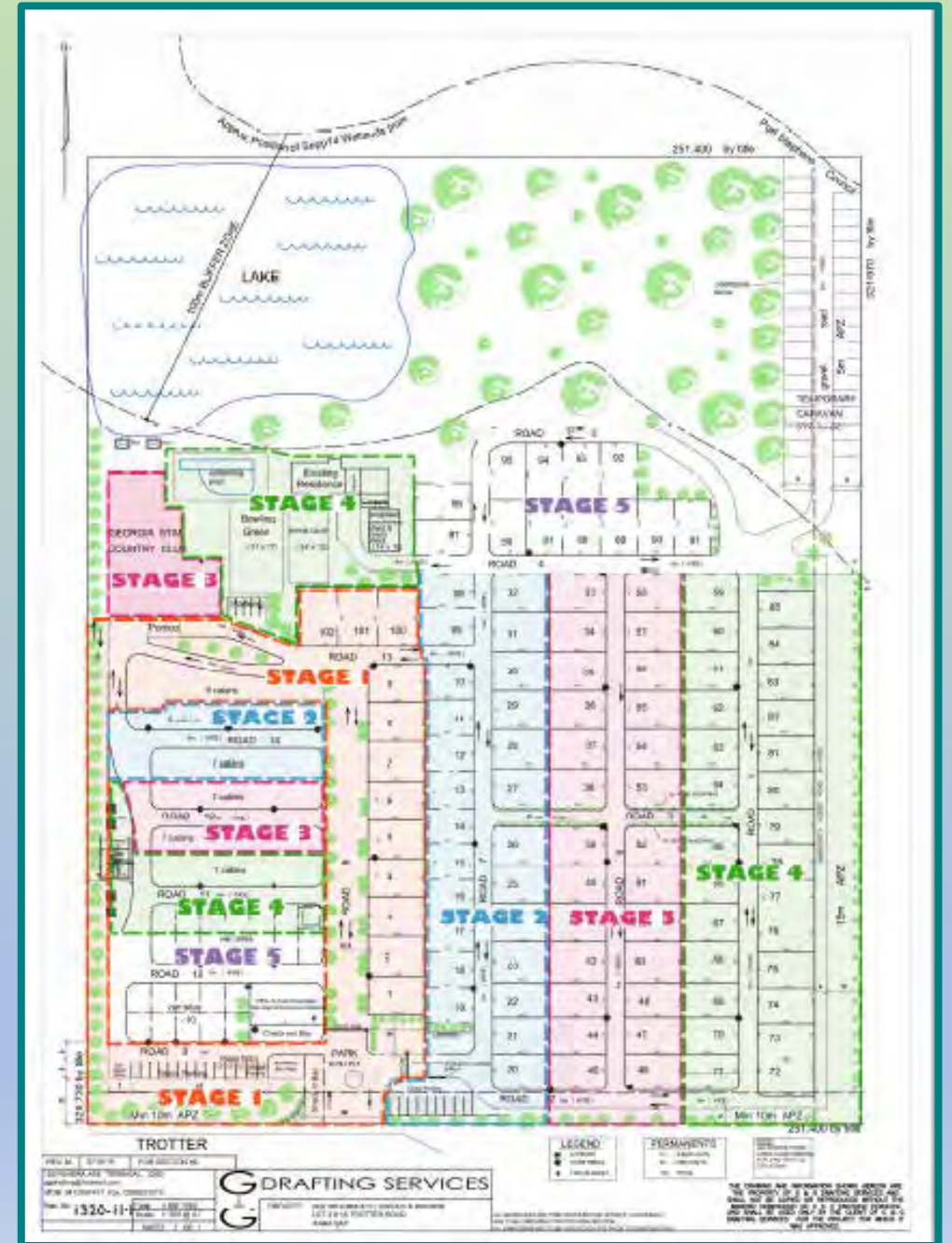
Sunrise “Caravan Park” Nelson Bay Rd Bobs Farm

S96 modification
196 to 193 (still
an increase of 5
residences from
the original 188)



The Boardwalk Trotter Rd Bobs Farm

102 Long term sites, 45
cabins and 24 caravan sites



Ingenia Lifestyle's Latitude One over-55 estate at Anna Bay



12. Tomaree Sports Complex Master Plan



- § Master Plan needed to co-ordinate revamping of existing facilities and to guide future development
- § Estimated cost \$65 million
- § New ovals will replace Council Depot
- § Complex would host major regional events
- § TRRA submission included:
 - Ø Proposed works will compete with priorities already in Capital Works Plan
 - Ø No business case which should provide evidence of future demand and operational costs and revenue
 - Ø No discussion of other potential users
 - Youth facility
 - Park and ride for peak overflow from Nelson Bay, Salamander Centre
 - Gan Gan Hill Gondola

109
Foreshore
Drive
Salamander
Bay



§ Link to proposed sale of 190 Foreshore Drive

- Ø Mayor proposed in Notice of Motion the sale of waterfront block with proceeds to start on Sporting Complex
- Ø Vigorously opposed by community
- Ø TRRA presented case to Council in Public Access opposing sale of waterfront land
- Ø Mayor has listened to community and withdrawn motion
- Ø Other funding options being assessed
- Ø Community groups will seek to have block reclassified to Community Land

13. Cabbage Tree Road Sand Quarry Appeal

Proposed
Site
Layout
and
Sequence
of Sand
Extraction

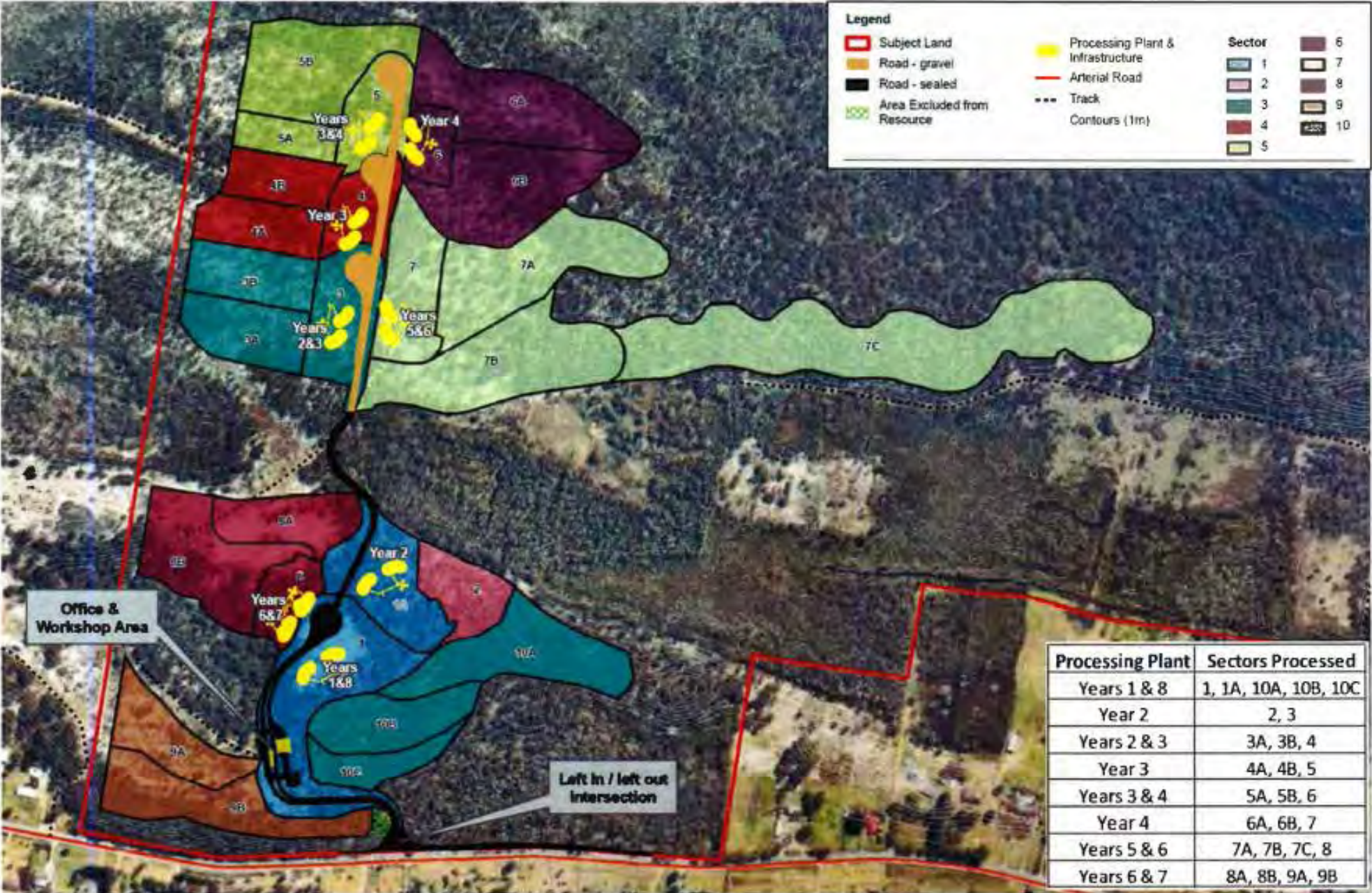


Figure 2 – Proposed site layout and sequence of sand extraction



Independent
Planning
Commission

MEDIA RELEASE

**SAND QUARRY POSES NO PFAS RISK,
CAN PROCEED WITH STRICT CONDITIONS: IPC**

Wednesday 9 May 2018

- § Council on 27 March resolved to prepare a report detailing options relating to the sand quarry including estimated cost of revoking the lease.
- § Examiner report suggests cost estimate too high for Council budget
- § Williamtown and Surrounds Action Group (WSRAG) lodged an appeal in the Land and Environment Court with pro-bono support from the Newcastle Legal Centre
- § WSRAG not convinced by the findings
- § Community will need to fund significant costs
- § Suggest TRRA contribute \$200

14. General Business

Next Meeting: Monday 20 August 2018



Thank you for Attending