



Tomaree Ratepayers and Residents Association Public and General Meeting 6 August 2018

Agenda

Public Meeting

1. Apologies
2. SPECIAL RATE VARIATION PROPOSAL (Mayor, Council)

General Meeting

12. Halifax Park – future of Lot 424 – Public Reserve (GW)
3. Minutes of meeting 18 June 2018 (Posted on TRRA Website)
4. Business Arising (Covered in other items)
5. Correspondence In and Out (GW)
6. Business Arising from Correspondence
7. Treasurers Report (DP)
8. Nelson Bay Delivery Program (JJ)
9. Nelson Bay Now Report (GW)
10. Town Gateway - Nelson Bay Road and Signage (MW)
11. DA Updates (JJ)
13. General Business

PUBLIC MEETING

2. Special Rate Variation Proposal

- **Introduction by Mayor of Port Stephens
- Ryan Palmer**
- **Comments by Councillors**
- **Questions and comments from the floor**

Agenda

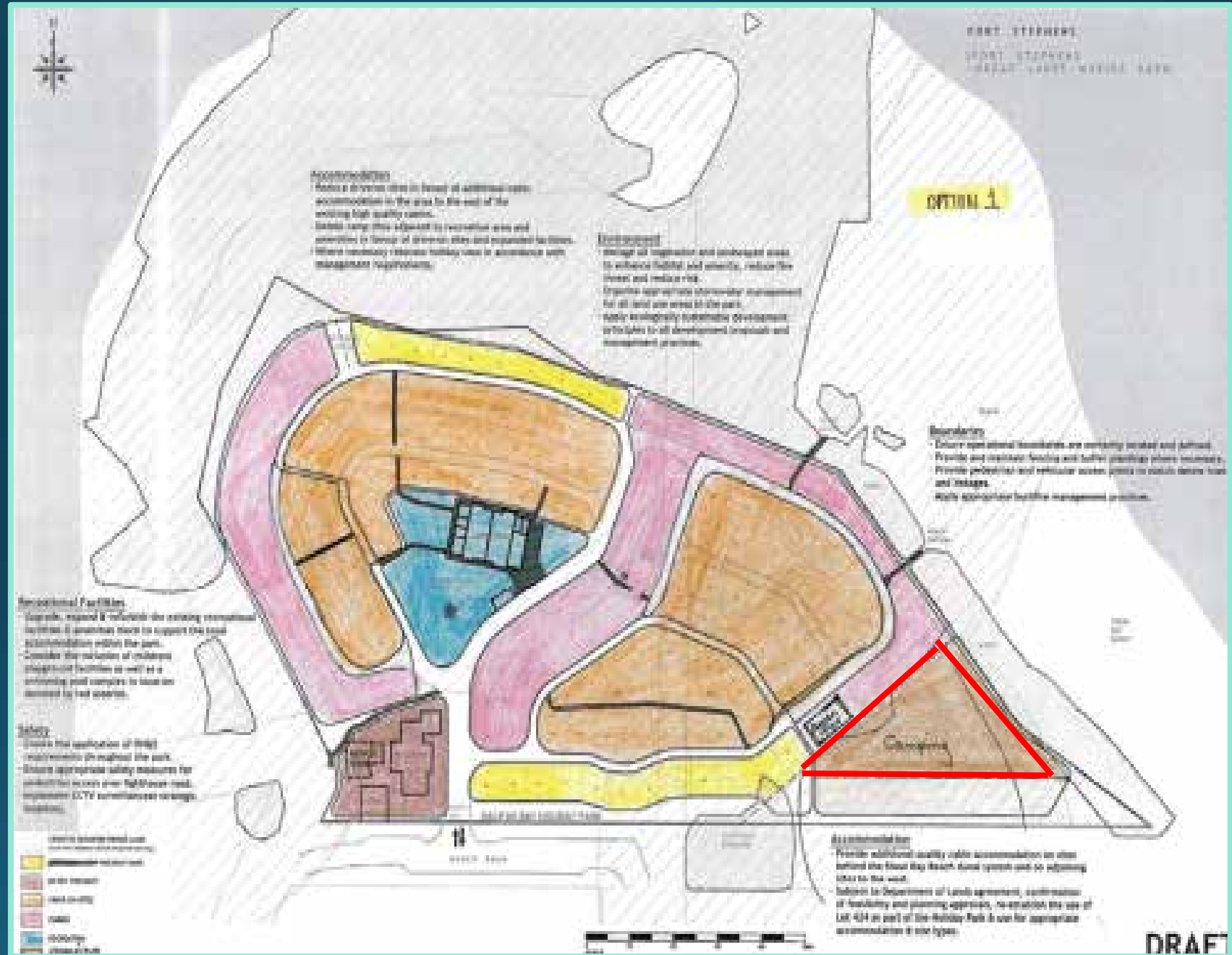
General Meeting

- 12. Halifax Park – future of Lot 424 – Public Reserve (GW)**
- 3. Minutes of meeting 18 June 2018 (Posted on TRRA Website)**
- 4. Business Arising (Covered in other items)**
- 5. Correspondence In and Out (GW)**
- 6. Business Arising from Correspondence**
- 7. Treasurers Report (DP)**
- 8. Nelson Bay Delivery Program (JJ)**
- 9. Nelson Bay Now Report (GW)**
- 10. Town Gateway - Nelson Bay Road and Signage (MW)**
- 11. DA Updates (JJ)**
- 13. General Business**
- 14. Next Meeting**

12. Halifax Park – Future of Lot 424 – Public Reserve

(Geoff Washington)

Halifax Park



Vital Buffer between High Density Units and Holiday Park



Newly planted koala Feed Trees



A Local Objector



Connecting Pathway between Little and Shoal Bay Beaches







Important Picnic facilities for Local Units and Visitors





7. Treasurer's Report



TRRA
Income and Expenditure Statement
July 2018

		July 2018	Year to Date
Opening Balance		\$ 2,806.15	\$2,806.15
Income			
	Subscriptions	\$ 100.00	\$ 100.00
	Gold Coin Donations	\$ -	\$ -
	Donations	\$ -	\$ -
	Total Income	\$ 100.00	\$ 100.00

Expenditure

	Advertising	\$ -	\$ -
	Postage	\$ -	\$ -
	PO Box	\$ -	\$ -
	Printing	\$ -	\$ -
	Photocopying	\$ -	\$ -
	Lodgement Fees	\$ -	\$ -
	Internet Services	\$ 46.95	\$ 46.95
	Stationery	\$ -	\$ -
	GIPA Expenditure	\$ -	\$ -
	Assoc. Membership	\$ 70.00	\$ 70.00
	Professional Services	\$ -	\$ -
Total Expenses		\$ 116.95	\$ 116.95
Surplus/Deficit		- \$ 16.95	- \$ 16.95
Closing Balance		\$ 2,789.20	\$ 2,789.20

8. Progressing the Nelson Bay Town Centre and Foreshore Strategy: Implementation and Delivery Program

John James

- Revised version due in September 2018**

The following documents were exhibited from 21 February 2018 to 4 April 2018

- **The draft 'Progressing the Nelson Bay Town Centre and Foreshore Strategy: A revised implementation and delivery program (2017)'** (PDF 10.4 KB)
- **Draft Clause 4.6 Policy** [Exceptions to Development Standards] (PDF 93.9KB)

Submissions are currently being reviewed and a final delivery program will be presented to Council for adoption including consideration of public exhibition outcomes

Submissions received from key agencies, community and other stakeholder groups include:

- **NSW Department of Planning & Environment** (PDF 186KB)
- **Tomaree Ratepayers & Residents Association Inc.** (PDF 1.1MB)
- **Tomaree Business Chamber** (PDF 219KB)
- **Nelson Bay NOW** (PDF 247KB)
- **Shoal Bay Community Association Inc.** (PDF 217KB)
- **Destination Port Stephens** (PDF 981KB)
- **EcoNetwork – Port Stephens Inc.** (PDF 163KB)

9. Nelson Bay Now Report

(Geoff Washington)

- **Yacaaba Street extension**
- **New functions – Transport Interchange, Educational Centre, Council Administration**
- **Public Domain Plan and implementation including Apex Park**

Yacaaba Street Extension



10. Town Gateway - Nelson Bay Road and Signage

(Margaret Wilkinson)



Nelson Bay Road and Signage

Improvement to Town entrance



11. DA Updates. - DAs of Interest

(John James)

- **1 Yacaaba Street - 10-storey mixed residential/commercial**
- **Hospital**
- **Transport Interchange, Gan Gan Rd, Birubi Point**
- **Fleet Street**

**1 Yacaaba
Street**

**10-storey
mixed
residential/
commercial**







STREETSCAPE EAST ELEVATION
1:100



STREETSCAPE WEST ELEVATION ALONG DONALD STREET
1:100

Hospital





Transport Interchange, Gan Gan Rd, Birubi Point





APPROACH FROM COACH DROP OFF

Fleet Street

Figure 3 – Aerial Photograph of the Development Site





RL 23,6 ROOF

RL 20,7 ALFRESCO

RL 17,7 THIRD FL

RL 14,7 SECOND FL

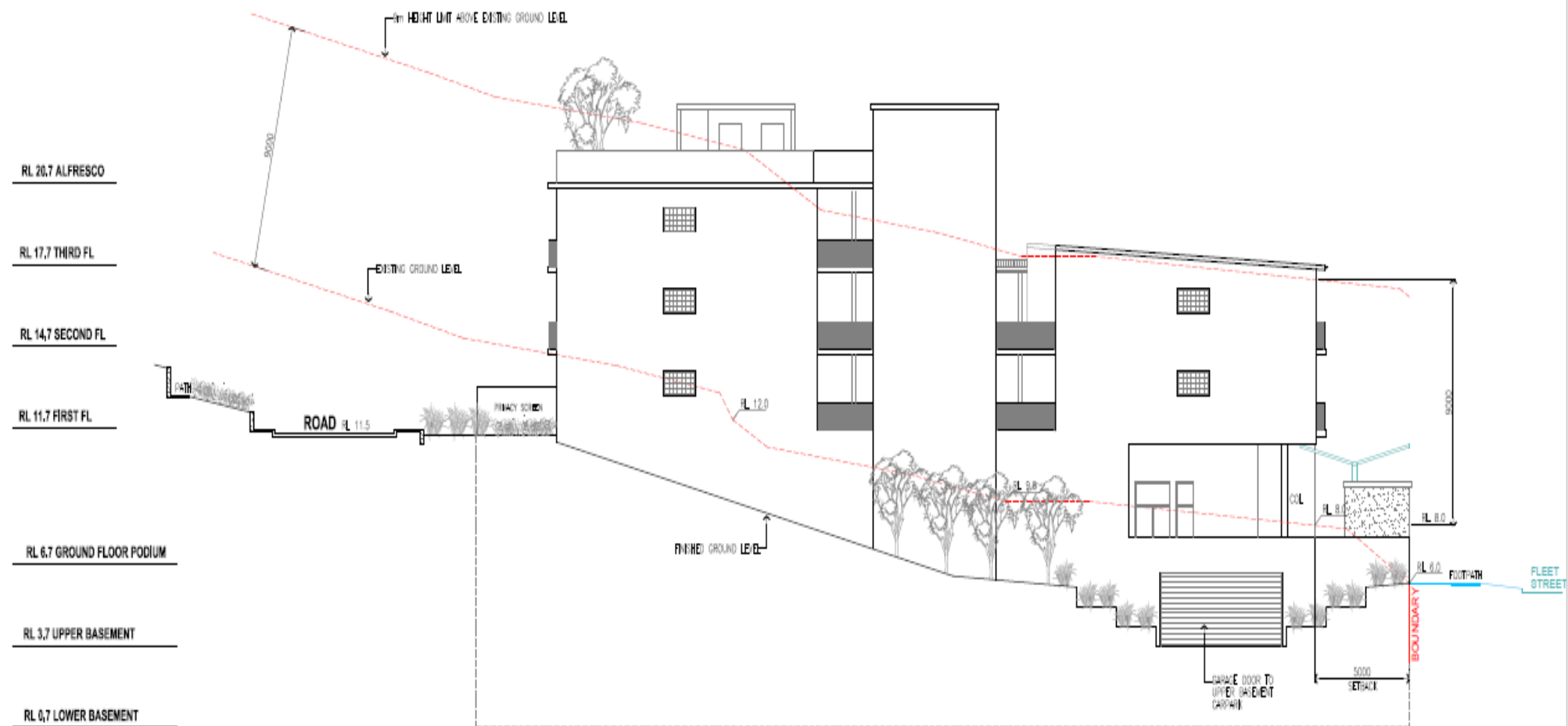
RL 11,7 FIRST FL

EXISTING GROUND LEVEL

RL 6,7 GROUND FLOOR PODIUM



SOUTH ELEVATION - fleet street



WEST ELEVATION

13. General Business

**Next Meeting: Monday 10 September
(Extra Meeting)**



Thank you for attending