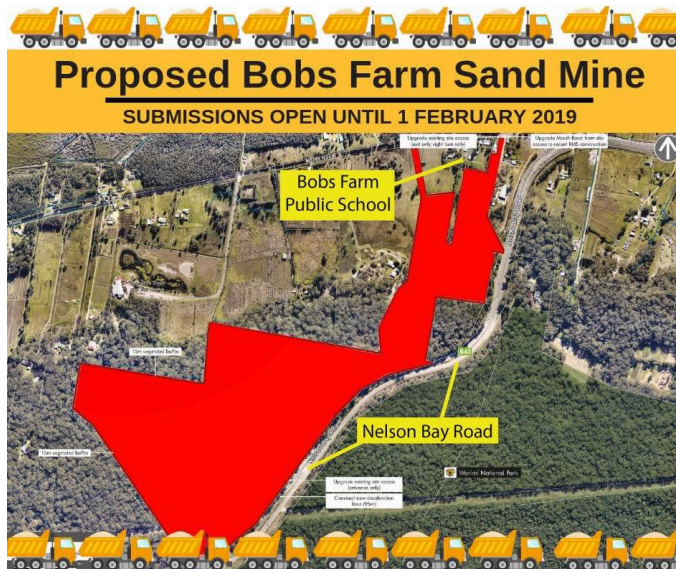


TRRA supports Bobs Farm community in rejecting massive sand mine

A major new sand mine at Bobs Farm, on the site of the fig and olive farm, was first proposed in 2014 and provoked immediate opposition both from the local community and more widely. The proponents – Ammos Resource Management, have now lodged a development application which is on exhibition, with a mass of supporting documents, until 1 February 2019.



Because of the nature and scale of the proposal it is being assessed by the State Department of Planning rather than Port Stephens Council, and will be decided by an 'Independent Planning Commission'. Details of the project and how to make a submission are on the [Major Projects](#) site.

The proposal is unacceptable on many levels – including its threat to the local public school, the environmental damage and the heavy traffic implications for Nelson Bay Road. The mine, on a 38 hectare footprint (that's 38 sports fields!) would extract up to 750,000 tonnes of sand a year for 15 years, excavating to 15 metres below sea level and leaving a huge 25 hectare lake. Up to 200 heavily loaded trucks a day (20 an hour) would leave the mine site within metres of Bobs Farm public school and travel an extra 10 km to the Port Stephens Drive roundabout at Anna Bay and back even before they added to the existing and growing traffic from other sand mines along Nelson Bay Road and other routes, much of them single lane roads.

The Bobs Farm Community has mobilised again and has a Facebook page [Say No To Sand Mining in Bobs Farm](#) which already has more than 1600 followers.

TRRA will be lodging an objection to this proposal and encourages members and supporters to do the same before 1 February. We can't beat the advice and guidance given by the local group on its Facebook page, and they are also fundraising [HERE](#) to help pay for expert reports and representation.

Key points of objection include:

Vegetation and Habitat loss - Clearance of over 100 acres of old growth forest on ancient sand dunes.

Disruption to Bobs Farm School - the proposed operations will see a loaded truck pass within metres of the school on average every three minutes.

Air quality, additional particulate matter from diesel fumes and silica dust (a hazardous substance which can cause silicosis).

Road safety concerns with up to 200 trucks per day (20 per hour) exiting into a 40km school zone, turning left onto Nelson Bay Road and “U” turning at the Port Stephens Drive roundabout.

Ground water will be affected due to dredging activity, this could threaten the quality and flow of the aquifer, particularly for those “downstream”.

Tank water will potentially be contaminated.

Koala Habitat The loss of preferred Koala Habitat

Ecological Corridor The proposed artificial lake will remain permanently within an important ecological corridor limiting its function.

Ground water Contamination There is a potential for ground water contamination from dredging of the site below the natural ground water level

Gateway to “the Bay”, this proposal is in an inappropriate location. Visible to road users and adjacent to a residential area and school